

# Power Curve Working Group 3<sup>rd</sup> Meeting Round Robin Results Overview

Peter Stuart  
Senior Technical Manager

Tuesday 30<sup>th</sup> March 2013



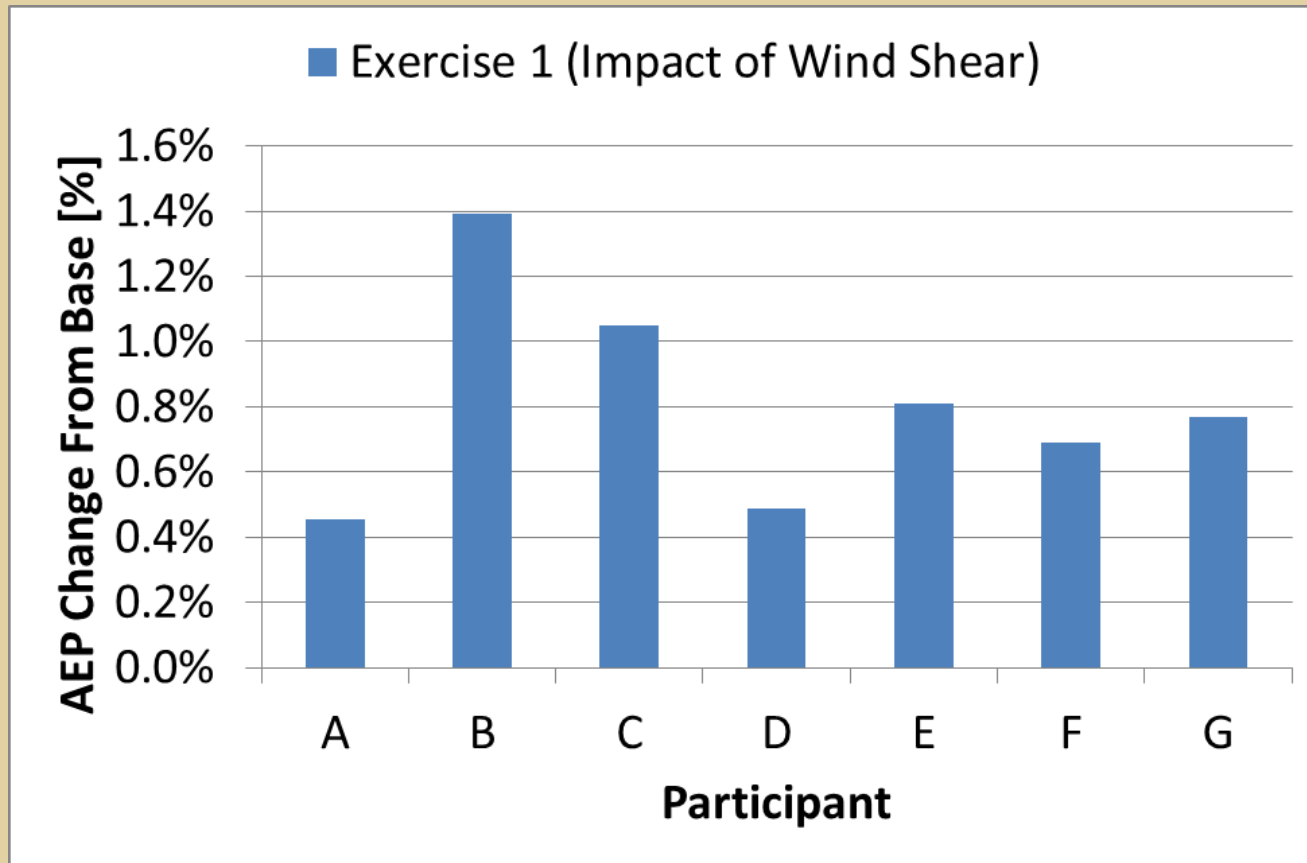
## Participation Overview

- 7 participants; 3 developers, 3 consultants & 1 manufacturer.
  - Exercise 1: Shear Correction
  - Exercise 2: Turbulence Correction
  - Exercise 3: Stakeholder Interaction (Inner/Outer)

Participant	Exercise 1	Exercise 2	Exercise 3a	Exercise 3b
A	TRUE	FALSE	TRUE	TRUE
B	TRUE	TRUE	TRUE	TRUE
C	TRUE	TRUE	TRUE	FALSE
D	TRUE	TRUE	FALSE	FALSE
E	TRUE	FALSE	FALSE	FALSE
F	TRUE	TRUE	TRUE	FALSE
G	TRUE	TRUE	TRUE	TRUE

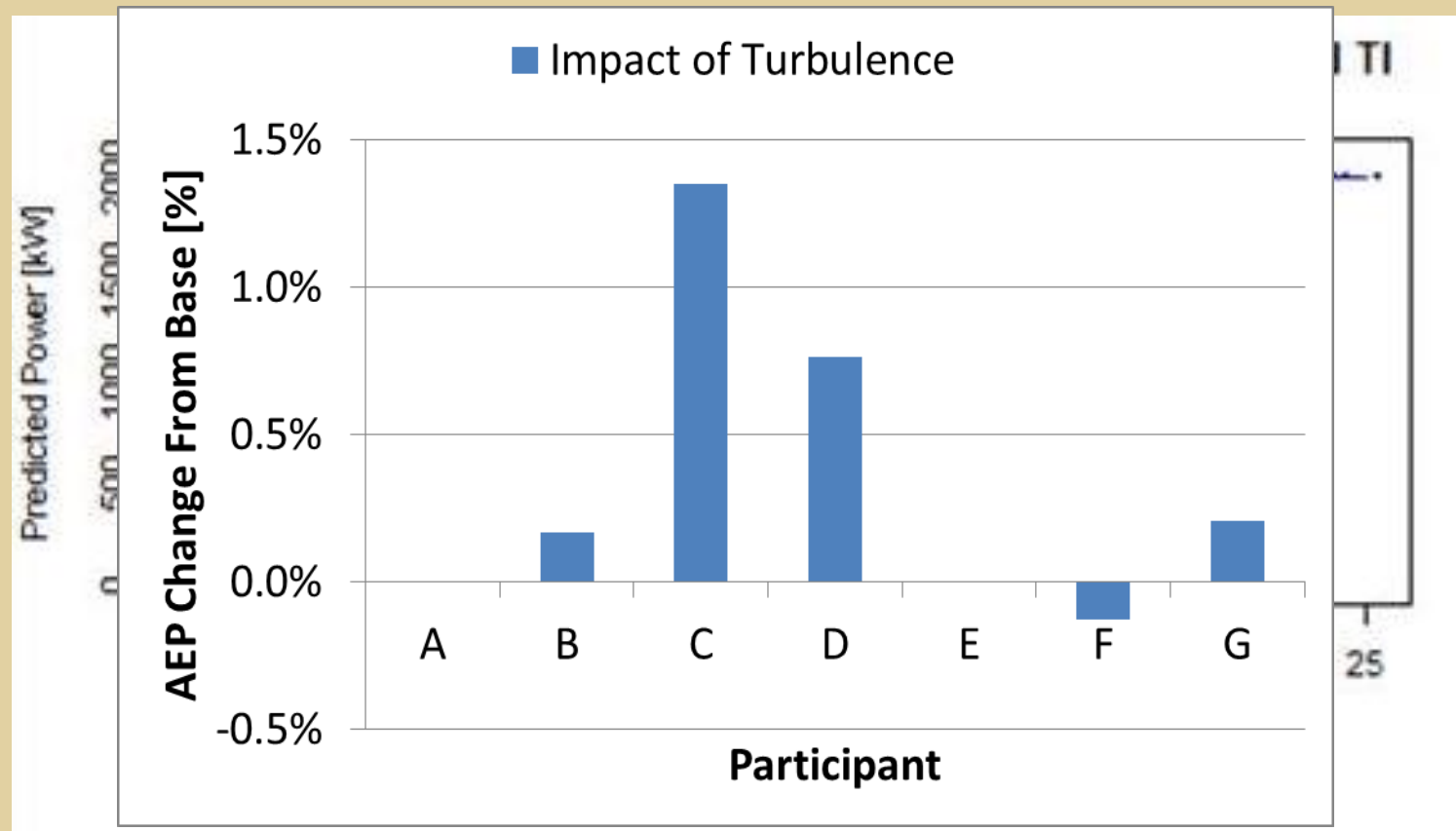
## Exercise 1: Impact of Using Rotor Equivalent Wind Speed

- Broad agreement that use of rotor equivalent wind speed gives a slight increase in yield (for this site)

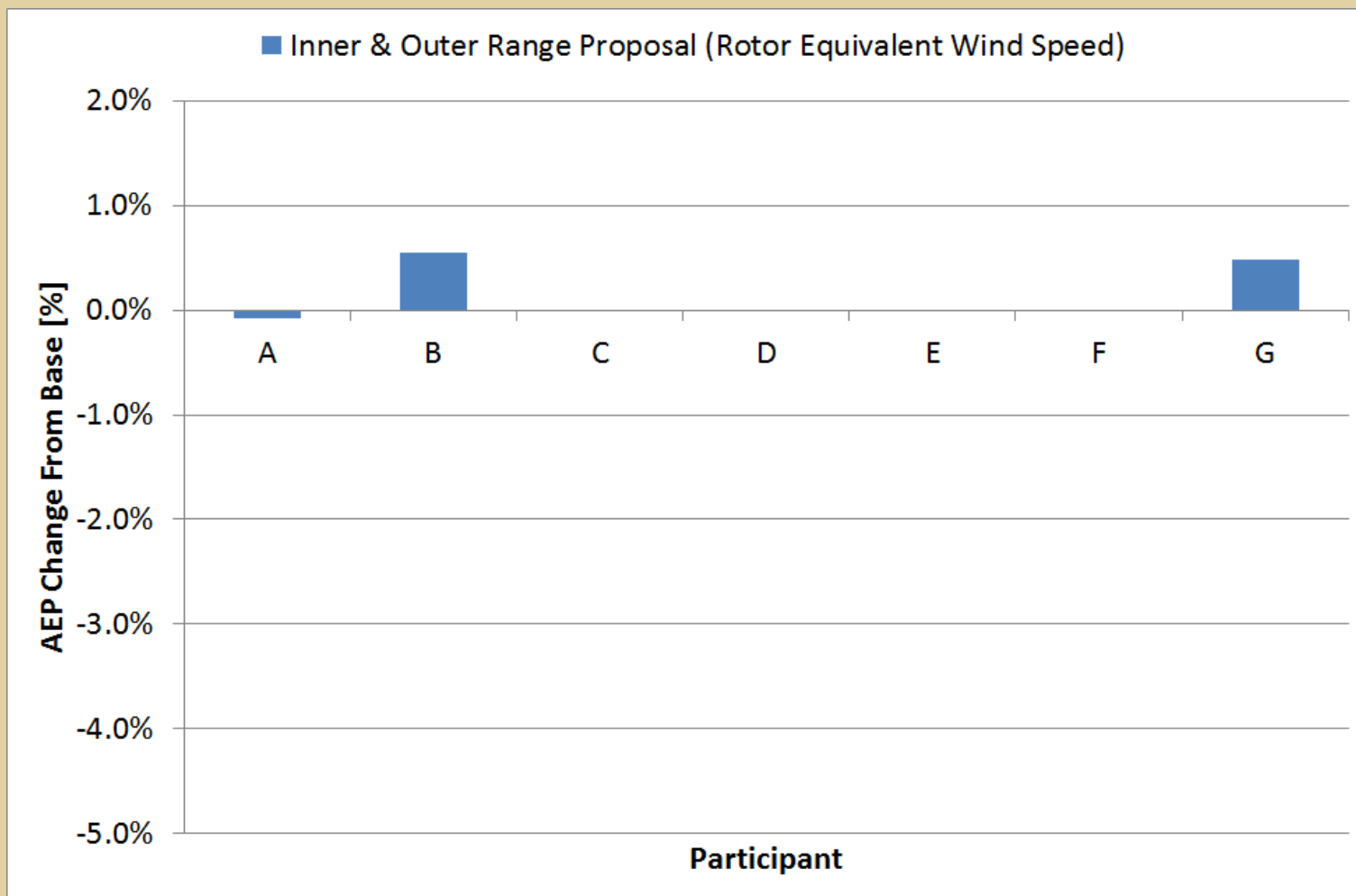


## Exercise 2: Impact of Turbulence (IEC Method)

- Less participation than exercise 1 (feedback that it was more difficult)
- Most results show an increase in yield, but quite a spread.



## Exercise 3: Inner/Outer Range (Stakeholder Interaction)



nes

power for good